

TORONTO
COMMERCIAL
OPPORTUNITY
ON
YONGE
STREET
IN ROSEDALE

1140 YONGE STREET
TORONTO, ON

STAN VYRIOTES, Broker
stan@dwsv.ca • 416.738.5908

DAVID WEDEMIRE, Sales Representative
david@dwsv.ca • 416.885.3153

VANESSA LYNCH, Sales Representative
vanessa@dwsv.ca • 416.347.3812



SITE DETAILS

THE CURRENT SPACE

Amazing opportunity for a short term/pop up in the exclusive Rosedale neighborhood, located on the south west corner of Marlborough Avenue & Yonge Street. This high visibility, high traffic location is steps away from, Terroni's, The Five Thieves' and the LCBO. Total of approximately 8,000 square feet with the potential of long term lease. Perfect space for temporary co-working space, pop up market, farmers/food market, high-end retail, exercise facility, child care, event space for special events and weddings, Parking for 20 cars.

Base Rent:

Contact Listing Agent

CAM / Taxes:

Contact Listing Agent

Square Footage:

8,000 (Approximate)

Ceiling Height:

35 Feet Eastern Side of Building /
14 Feet Western Side of Building

Parking:

20 Surface Commercial Spaces



TORONTO
COMMERCIAL OPPORTUNITY
ON YONGE STREET IN ROSEDALE

THE AREA ROSEDALE SHOPS



1140 YONGE STREET

THE AREA ROSEDALE SHOPS



FUTURE DEVELOPMENT

1140 YONGE STREET

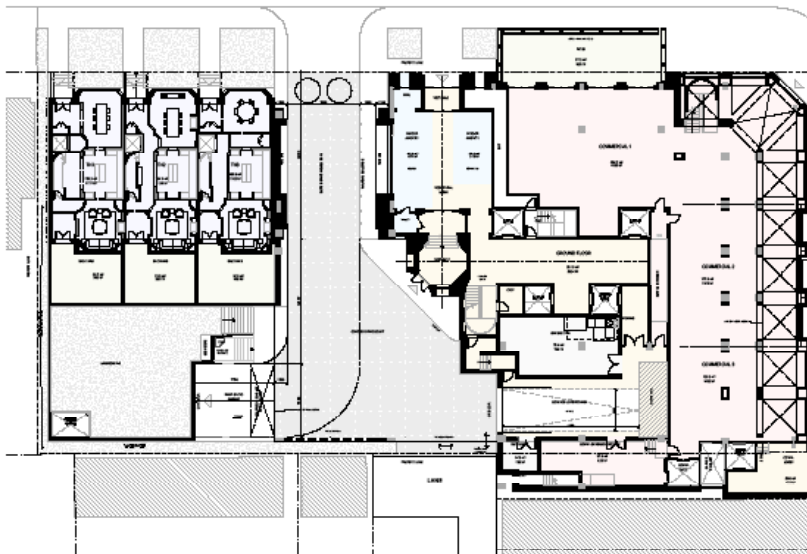
6



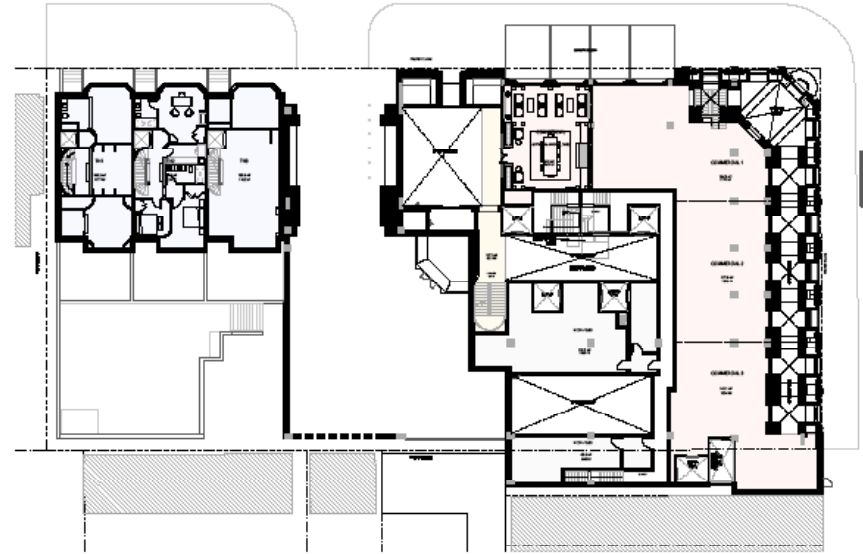
FUTURE DEVELOPMENT



FUTURE RETAIL OPPORTUNITY



GROUND FLOOR PLAN
APPROXIMATELY 7500 SQ FT



SECOND FLOOR PLAN
APPROXIMATELY 4500 SQ FT



REMAX ULTIMATE REALTY INC.

STAN VYRIOTES

Broker

stan@dwsv.ca • 416.738.5908

DAVID WEDEMIRE

Sales Representative

david@dwsv.ca • 416.885.3153

VANESSA LYNCH

Sales Representative

vanessa@dwsv.ca • 416.347.3812